



This manual is for reference and historical purposes, all rights reserved.

**This page is copyright© by M. Butkus, NJ.**

This page may not be sold or distributed without the expressed permission of the producer

I have no connection with any camera company

On-line camera manual library

This is the full text and images from the manual. This may take 3 full minutes for the PDF file to download.

**If you find this manual useful, how about a donation of \$3 to: M. Butkus, 29 Lake Ave., High Bridge, NJ 08829-1701 and send your e-mail address so I can thank you. Most other places would charge you \$7.50 for a electronic copy or \$18.00 for a hard to read Xerox copy.**

**This will allow me to continue to buy new manuals and pay their shipping costs.**

**It'll make you feel better, won't it?**

**If you use Pay Pal or wish to use your credit card,  
click on the secure site on my main page.**

Canon

ELPH Jr.

E

F

G

S

I

P

IXUS L-1



**E** English

**F** Français

**G** Deutsch

**I** Italiano

**S** Español

**P** Português

  
ADVANCED  
PHOTO SYSTEM™

## Handling Precautions

1. This camera is not resistant to water, and should not be used outdoors if it is raining or snowing. If it is accidentally dropped in water, contact an authorized Canon service facility. Keep the camera out of salt spray and excessive humidity. If used at the beach, clean it thoroughly afterward with a dry cloth.
2. Store the camera in a cool, dry, dust-free place. Be sure to keep the camera out of direct sunlight, and away from "hot spots" such as the trunk or rear window shelf of a car. Avoid places where mothballs are used, and use a desiccant in excessive humidity.
3. Do not attempt to disassemble the camera yourself, since there is high-voltage circuitry inside.
4. The battery may explode or cause burns if disassembled, recharged, shorted, exposed to high temperatures, or disposed of in a fire.
5. Use a blower brush to remove dust and sand from the lens and inside the camera. Do not apply any fluids to the lens or body. Take the camera to an authorized Canon service facility for a more thorough cleaning if necessary.
6. Film passing through X-ray examinations at an airport may be exposed and ruined even when loaded in the camera. Request a different method of inspection to avoid damage.
7. Color reproduction may be adversely affected if the film is left in the camera for a long time. Always develop exposed film promptly.

### For German-speaking users

This product is intended for use in residential, commercial and light industry environment.

This device complies with Part 15 of the FCC Rules. Operation is subject to the following two conditions: (1) This device may not cause harmful interference, and (2) this device must accept any interference received, including interference that may cause undesired operation.

Do not make any changes or modifications to the equipment unless otherwise specified in the instructions. If such changes or modifications should be made, you could be required to stop operation of the equipment.

This equipment has been tested and found to comply with the limits for a class B digital device, pursuant to part 15 of the FCC Rules. These limits are designed to provide reasonable protection against harmful interference in a residential installation. This equipment generates, uses and can radiate radio frequency energy and, if not installed and used in accordance with the instructions, may cause harmful interference to radio communications.

However, there is no guarantee that interference will not occur in a particular installation. If this equipment does cause harmful interference to radio or television reception, which can be determined by turning the equipment off and on, the user is encouraged to try to correct the interference by one or more of the following measures:

- Reorient or relocate the receiving antenna.
- Increase the separation between the equipment and receiver.
- Consult the dealer or an experienced radio/TV technician for help.

1

---

This digital apparatus does not exceed the Class B limits for radio noise emissions from digital apparatus as set out in the interference-causing equipment standard entitled "Digital Apparatus", ICES-003 of the Industry Canada.

---

Cet appareil numérique respecte les limites de bruits radioélectriques applicables aux appareils numériques de Classe B prescrites dans la norme sur le matériel brouilleur: "Appareils Numériques", NMB-003 édictée par l'Industrie Canada.

---

**CE** The CE Mark is a Directive conformity mark of the European Community (EC)

**Thank you for purchasing this Canon product.**  
Before taking pictures, please read these instructions carefully for a thorough understanding of how the camera operates.

## Table of Contents

These instructions are divided into four sections: Introduction, Basic Operations, Advanced Operations, and Additional Information. When first using the camera, be sure to read the instructions from the Introduction.

### Convention

The following convention is used in these instructions:



Warnings you should observe when using the camera.



Additional information on using the camera.

<b>1</b>	<b>Introduction</b>	
	Handling Precautions .....	2
	Table of Contents .....	4
	ADVANCED PHOTO SYSTEM Features .....	6
	Advanced Photo System Quick Reference ....	8
	Quick Reference .....	10
	Nomenclature .....	12
	Attaching the Strap .....	14
<b>2</b>	<b>Basic Operations</b>	
	1 Loading the Battery .....	15
	2 Loading the Film Cartridge .....	16
	Checking the Film Speed and the Maximum Number of Frames .....	18
	3 Turning the Power On .....	19
	Checking the Battery Power .....	20
	4 Holding the Camera .....	21
	5 Viewfinder .....	22
	Parallax Compensation for Close-ups .....	23

6	Selecting the Print Type (C/H/P) .....	24
7	Shutter Button Action .....	25
	Shooting through a Window .....	25
	Green/Orange Indicators .....	26
8	Removing the Film Cartridge .....	27
	Film Cartridge Processing.....	28
	Handling Film Cartridges After Exposure .....	28

### **3** ■ **Advanced Operations**

	Focus Lock .....	29
	Date and Time Imprinting .....	30
	Switching the Date Format .....	31
	Setting and Adjusting the Date/Time .....	32
	Imprinting Titles .....	34
	Selecting the Title Language .....	34
	Selecting the Title.....	35
	Changing the Flash Mode .....	36
	Red-eye Reduction Function .....	37
	Auto Flash Mode without Red-eye Reduction....	38
	Auto Flash Mode with Red-eye Reduction .....	39
	Flash ON Mode .....	40
	Flash OFF Mode .....	41
	Slow-synchro Mode with Red-eye Reduction ....	42
	Self-timer Shooting.....	43
	Shooting with the Optional Remote Control..	44
	Replacing the Remote Control Battery .....	45

### **4** ■ **Additional Information**

	Troubleshooting .....	46
	Questions & Answers .....	47
	Specifications .....	48



# ADVANCED PHOTO SYSTEM

This is an Advanced Photo System camera. This system as well as Canon's advanced technology has made it possible to produce a camera that is smaller than any previous camera.

Here are some of the special new features of this system.

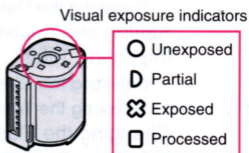
## 1 New Film

The IX240 new film comes in a compact film cartridge with no leader. This new drop-in film can be easily loaded by anyone, and replaces all previous hard-to-load films.

In addition, the visual exposure indicator on the top of the cartridge shows whether the film cartridge is

unexposed, exposed, or processed.

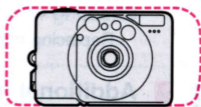
\*This camera model does not mark the film to show when it has been partially exposed ( D indicator).



## 2 New Camera Size

The Advanced Photo System allows cameras and film cartridges to be much more compact than previously possible (Canon model comparison).

Moreover, Canon's advanced technology has made it possible to produce this ultra compact camera.



## Features

### 3 New Type Prints

The Advanced Photo System allows the camera to shoot three types of prints: in addition to classic print types (C print), you can now shoot wide-angle (H print) and panorama (P print) prints.

The Advanced Photo System can also imprint date/time information on the back of the print, or on the front and back of the print. The system can also imprint title text on the back of the print.

\*Character size, shape, color, position, and ability to print on both sides may vary according to the individual photo shop.



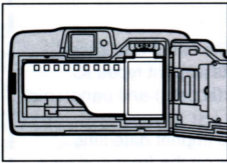
### 4 New Processing Methods

Previous 135 (35mm) film has always been returned from the processing lab as negative strips. This has made ordering reprints inconvenient since each picture must be found on the negative strips. With the Advanced Photo System however, the negative film is returned from the certified shop reloaded in its cartridge, accompanied by an index print. Unlike hard-to-see negative strips of previous cameras, this index print (where all shots can be viewed) makes reviewing prints much easier. Users can now order reprints simply by matching the ID on the back of the print or on the index print with the ID on the film cartridge, and then specifying the print number to be reprinted at the photo shop.

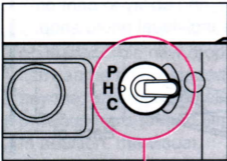
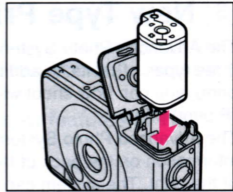




# Advanced Photo System Quick Reference



Previous film



Print type selection lever



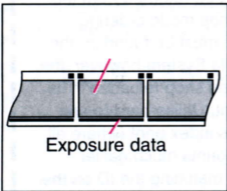
C print



H print



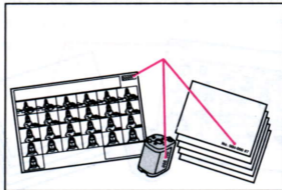
P print



Exposure data

Data recorded on film  
(example)

- Date and title
- Print type
- Film direction
- Flash ON/OFF
- Subject brightness
- Etc.



For further details, refer to the page indicated.

**1. Simple film cartridge loading. (→ p. 16)**

- Unlike previous 135 (35mm) film, there is no need to open the back cover and pull the film leader across.

**2. Choose the print type with the print type selection lever. (→ p. 24)**

- ➔ You can choose from three print types.
  - C print: Classic print
  - H print: Wide-angle print
  - P print: Panorama print

**3. A variety of data (IX information) is recorded magnetically on the film surface.**

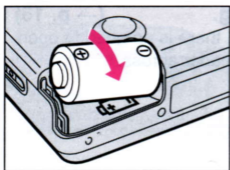
- All the information described at left can be recorded on the film.
- The exposure information is used in the printing process to produce better quality prints.

**4. Exposed film cartridges can be processed for printing at Advanced Photo System certified shops. (→ p. 28)**

- ➔ After developing, the shop will return your pictures, along with an index print, and the film cartridge with the negatives inside.
- When ordering reprints from a certified shop, just match the ID on the back of the print or on the index print sheet with the ID on the film cartridge, and specify which prints you want.

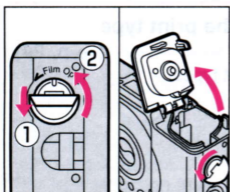
## Quick Reference

For further details, refer to the



### 1. Load the battery.

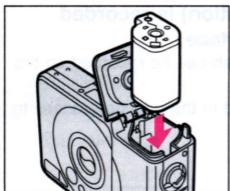
(→ p. 15)



### 2. Open the film cartridge compartment cover.

(→ p. 16)

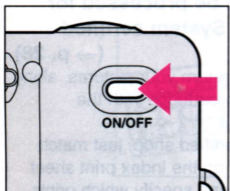
- To open, lift the crank ① and rotate left ②.



### 3. Insert the film cartridge, then close the film cartridge compartment cover.

(→ p. 16)

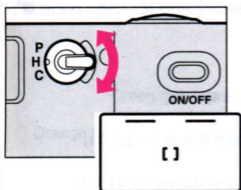
- Check that the film cartridge indicator is ○ (unexposed).



### 4. Press the main switch to turn the power on.

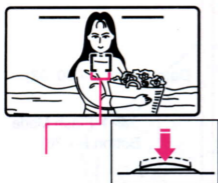
(→ p. 19)

- ➔ The lens is set for shooting.



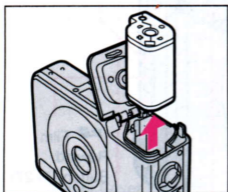
5. Select the print type with the print type selection lever. (→ p. 24)

➡ The viewfinder field changes.




6. Place the AF frame over the subject and press the shutter button. (→ p. 25)

➡ The flash fires automatically in low light or backlit conditions.

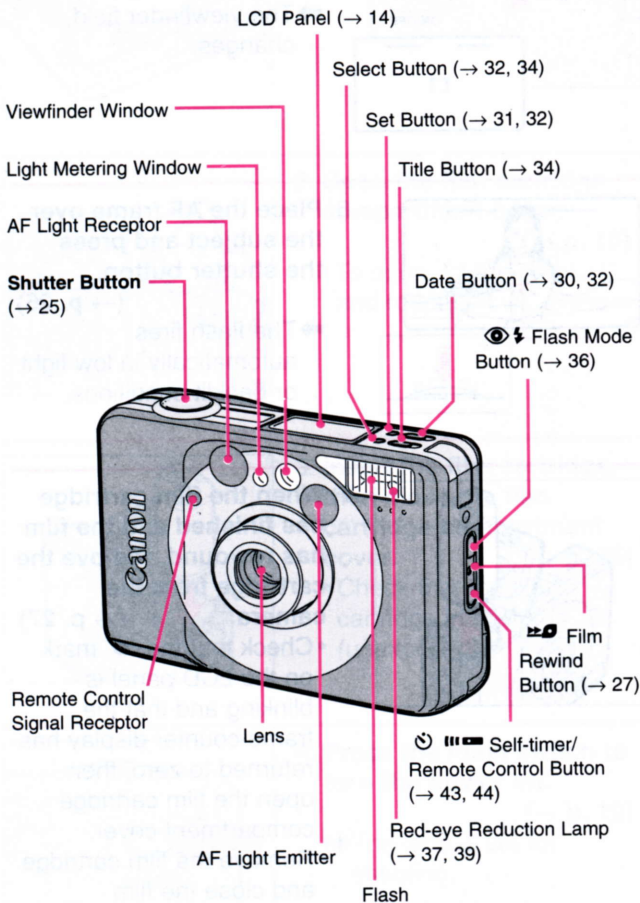


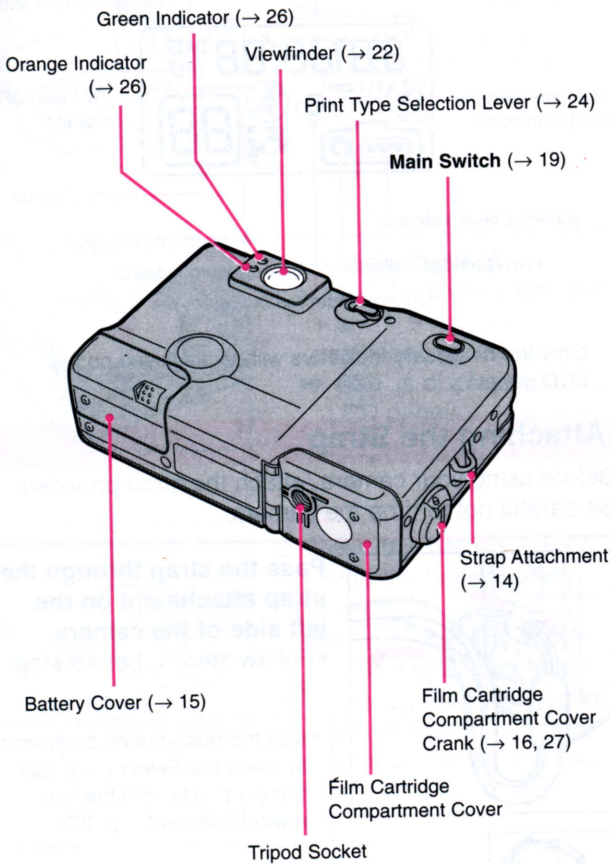
7. When the film cartridge has finished and the film has rewound, remove the cartridge from the camera. (→ p. 27)

- Check that the  mark on the LCD panel is blinking and that the frame counter display has returned to zero, then open the film cartridge compartment cover.
- Remove the film cartridge and close the film cartridge compartment cover.

# Nomenclature

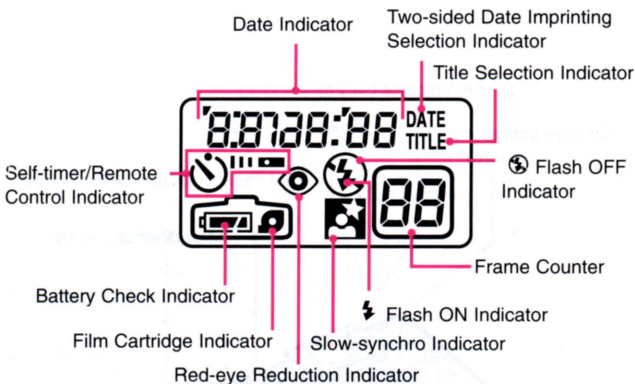
\* (→ ■) is shorthand for “See page ■”.





## Nomenclature/Attaching the Strap

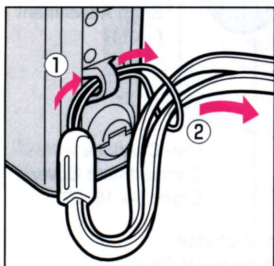
### LCD Panel



Only the necessary indicators will be displayed on the LCD panel.

### Attaching the Strap

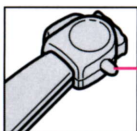
Before using your camera, attach the strap provided. Be careful not to drop the camera.



**Pass the strap through the strap attachment on the left side of the camera.**

- Follow step ① before step ②.

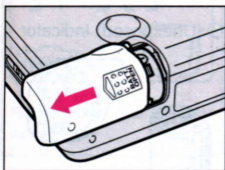
- Use the push-button projection to press the Select (→ p. 32), Set (→ p. 31), and the film rewind buttons (→ p. 27).




Push-button projection

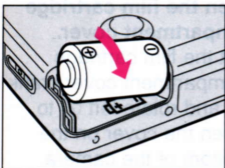
# 1 Loading the Battery

Battery: One lithium battery (CR2)




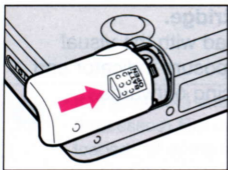
## 1. Open the battery cover.

- While pressing the  mark on the battery cover, slide the battery cover off.



## 2. Load the battery.

- Insert the battery with the + and - terminals positioned correctly.
- ➔  is displayed on the LCD panel.



## 3. Close the battery cover.

- Slide the battery cover closed.
- ➔ If "-- -- --" blinks in the LCD panel, after you change the battery, you will need to reset the date to the correct date and time (→ p. 32).



- After removing the battery to replace it, do not touch any of the switches on the camera. This will allow the date and time settings to be retained for approximately five seconds.

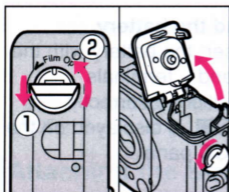
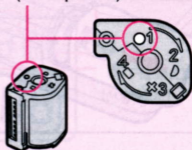


## 2 Loading the Film Cartridge

### Film cartridges

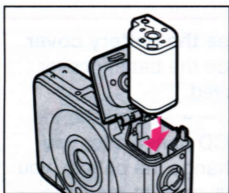
- Use IX240 film cartridge.
- Previous 135 (35mm) print film cannot be used.
- Processing can be done at any certified shop.
- Use film cartridges whose visual exposure indicator is ○ (unexposed).

○ (Unexposed) Indicator



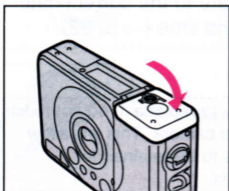
### 1. Open the film cartridge compartment cover.

- Lift the film cartridge compartment cover crank ① and rotate left ② to open the cover on the bottom of the camera.



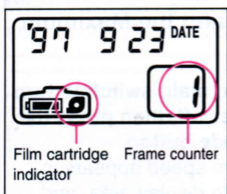
### 2. Load a new film cartridge.

- Load with the visual exposure indicator end facing outwards.



### 3. Close the film cartridge compartment cover.

- Close until it clicks.
- ➔ The film cartridge indicator on the LCD panel lights up.



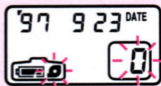
4. The film automatically advances to the first frame and "1" is displayed in the frame counter.

- If "1" is not displayed, check if a new film cartridge is loaded correctly.

2

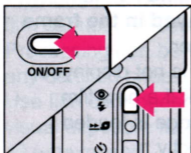


• If ☹ (exposed) and ◻ (processed) film cartridges are loaded, "0" in the frame counter and the film cartridge indicator will blink. Reload with a ○ (unexposed) film cartridge.



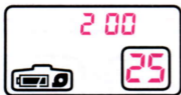
- Film cartridges with the D (partial) indicator cannot be used in this camera.
- If a film cartridge with the D indicator is loaded, the indicator will change to ☹ (exposed) making it impossible to take any more pictures on that film cartridge.

### Checking the Film Speed and the Maximum Number of Frames



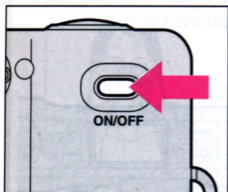
Press the main switch to turn the power off, then press the flash mode button.

➔ The film speed appears in the date display area, and the frame counter displays the maximum number of frames. (The illustration on the left shows ISO 200 as the film speed and 25 as the maximum number of frames.)



### 3 Turning the Power On

When the main switch is pressed, the power turns on and shooting is possible.



**Press the main switch.**

- ➔ The lens is set for shooting.
- ➔ The flash mode is set to auto flash (full auto mode).



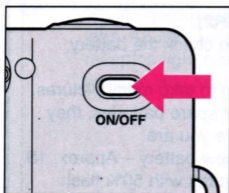
- Do not press on the lens.



- The power cannot be turned on or off when the film cartridge compartment cover is open.

### Turning the power off


To prevent damage to the lens, turn the power off after shooting.



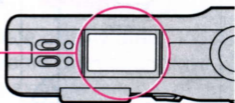
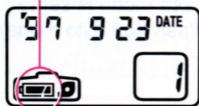
**Press the main switch.**

## Turning the Power On


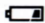

### Checking the Battery Power

Check that the  indicator is displayed on the LCD panel when the power is turned on.

Battery check indicator



### Battery Check Indicator

-  (Lit): Battery is full
-  (Lit): Have a new battery ready
-  (Blinks): Replace the battery (→ p. 15)



- Use one lithium battery (CR2).
- Before shooting, be sure to check the battery power.
- When traveling or planning to take many pictures, be sure to take a supply of spare batteries, they may not be available where you are.
- Shooting capacity with a new battery – Approx. 18 film cartridges of 25 exposures with 50% flash use. (Data based on Canon's Standard Test Method.)
- Shooting continuously with the flash will cause the battery power to fall momentarily, and the LCD panel display may be incorrect. Turn the power off and wait a while before turning it back on.

## 4 Holding the Camera

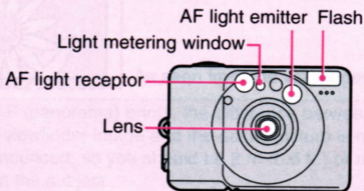
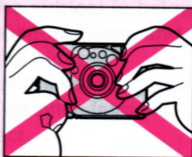
To take sharp pictures, hold the camera firmly so that it does not move.



- Hold the camera with both hands.
- Keep your elbows close to your body.
- Hold the camera against your nose and look through the viewfinder.

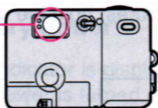


- Be careful to keep hair and fingers from blocking the lens, AF light emitter/receptor, light metering window, and flash.



## 5 Viewfinder

Viewfinder



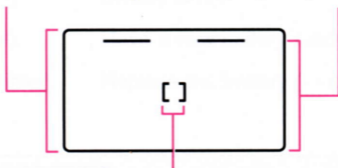
### Viewfinder Frames

#### Close-up frame

When the shooting distance is between 0.45 and 0.6 m (1.5 ft. and 1.9 ft.) compose your picture within this frame. The area above this frame will not be included for C and H print pictures. (→ p. 23)

#### Picture Frame

Compose your picture within this frame.  
(H print)



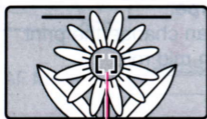
#### AF Frame

Place this frame over the subject you wish to take.

## Parallax Compensation for Close-ups

When taking photographs of subjects as close as 0.45 to 0.6 m (1.5 to 1.9 ft.) to the camera, the camera will cut off the top portion of the picture that is visible in the picture frame. This is called parallax displacement.

To take pictures of subjects at 0.45 to 0.6 m, follow the steps below to use the picture frame to compose the picture.



AF frame

- 1. Position the AF frame over the subject and press the shutter button halfway.**

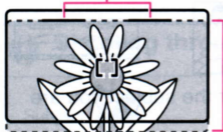
- Check that the green indicator is lit.
- Keep the shutter button pressed halfway.



Close-up frame

- 2. Move the AF frame so that the subject is below the close-up frame and take the picture.**

- Be careful not to change your distance from the subject.



As seen from the viewfinder

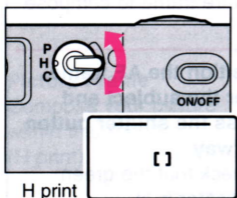
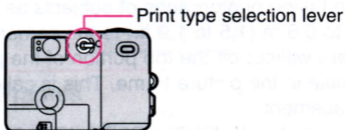


- For P (panorama) prints, the difference between the viewfinder image and the actual picture is more pronounced, so you should be 2 m (6.6 ft.) or away from the subject.



## 6 Selecting the Print Type

You can choose from three print types with this camera: C print, H print or P print.

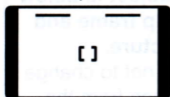


**Use the print type selection lever to select the desired print type.**

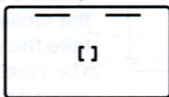
- You can change the print type in mid roll.

The viewfinder field changes when the print type selection lever is used. The black areas in the viewfinder will not be printed.

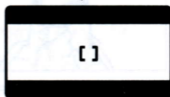
C print



H print



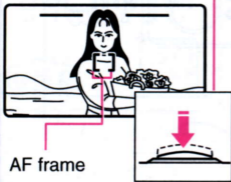
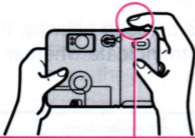
P print



Choose a print type suitable for the subject you are shooting.

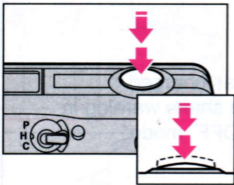
## 7 Shutter Button Action

This camera has a two-step shutter button.



### 1. Place the AF frame over the subject and press the shutter button halfway.

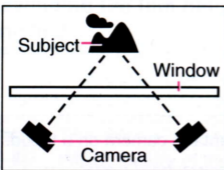
- ➔ The subject is focused.
- Check that the green indicator is lit.
- Keep the shutter button halfway pressed.



### 2. Press the shutter button fully.

- ➔ The shutter is released.
- Press the shutter button gently.
- There is a very short interval between the shutter button being pressed and the shutter being released. As a general guide, it is best to hold the camera still until you hear the film start to wind forward.

## Shooting through a Window

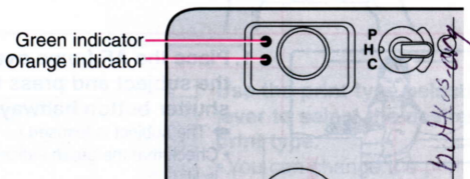


- If you are taking a picture through a window, set the camera at an appropriate angle, and as close to the window as possible. If you are too far away from the window, or at an inappropriate angle, the camera may focus on the glass of the window rather than the subject.

## Shutter Button Action

### Green/Orange Indicators

When the shutter button is pressed halfway, the indicators light up or blink to indicate whether or not shooting is possible.



#### Green indicator

Lights up: Ready for shooting (Subject in focus)


#### Orange indicator

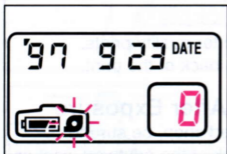
Lights up: Flash has charged  
Blinks (4 times/sec.): Camera shake warning in "Flash OFF" mode\*




\* We recommend you mount the camera on a tripod.

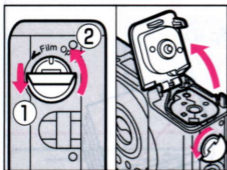
## 8 Removing the Film Cartridge

The film rewinds automatically when it reaches the end. The frame counter counts down during film rewinding. Check that the  mark on the LCD panel is blinking and that the frame counter display has returned to zero, then remove the film cartridge.



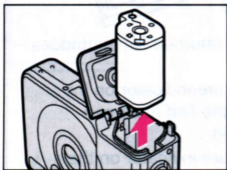
### 1. Check that the mark is blinking and that zero is shown in the frame counter display.

- If the film has stopped rewinding in mid-roll, press the film rewind button .




### 2. Open the film cartridge compartment cover.



- Lift the film cartridge compartment cover crank (1) and rotate left (2) to open the cover.

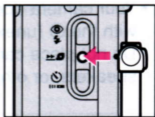


### 3. Remove the film cartridge.

- ➔ The film cartridge indicator on the LCD panel disappears.
- ➔ The visual exposure indicator on the film cartridge becomes  (exposed).

### Rewinding the film before it is finished

- Press the film rewind button .
- ➔ The visual exposure indicator on the film cartridge becomes  (exposed).



• This camera does not support the Mid-Roll Change (MRC) feature of the Advanced Photo System.

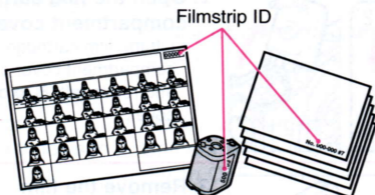
## Removing the Film Cartridge

### Film Cartridge Processing

- Exposed film cartridges can be processed for printing at Advanced Photo System certified shops.
- All certified shops do the following:
  - ① Return your cartridge with the negatives inside.
  - ② Process all three types of prints.
  - ③ Make an index print sheet.
  - ④ Use the print quality data for better quality prints.
  - ⑤ Imprint the date and title on the back of the print.

### Handling Film Cartridges After Exposure

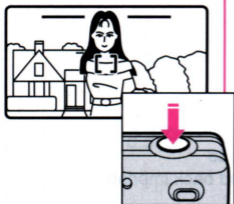
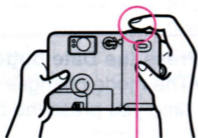
- When ordering reprints at a certified shop, be sure to match the ID number from the back of the print you want or from the index print with the ID on the film cartridge before handing in your film cartridge.



- Handle and store index prints and returned film cartridges carefully.
- Your camera sets the visual exposure indicator on the cartridge to ☸ (exposed) whether the film has been completely or only partially exposed.
- After processing, the visual exposure indicator on the cartridge becomes □ (processed).
- Your camera does not accept film cartridges not marked with the ○ (unexposed) indicator.
- Do not place cameras or film cartridges near televisions, speakers, or other sources of strong magnetic fields.

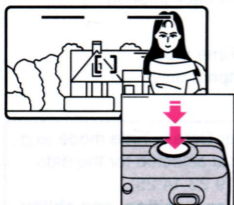
## Focus Lock

Use this mode to focus on a subject positioned close to the edge of the picture frame.



- 1. Center the AF frame over the subject and press the shutter button halfway.**

- ➔ The subject is focused when the green indicator lights up.
- Keep the shutter button halfway pressed.



- 2. With the shutter button halfway pressed, frame your picture as desired. Then press the shutter button fully.**

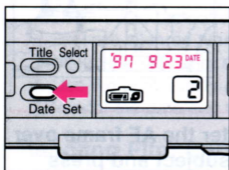
- ➔ The shutter is released.



- Be careful not to change the distance between the subject and the camera. If you do change it, redo focus lock.

## Date and Time Imprinting

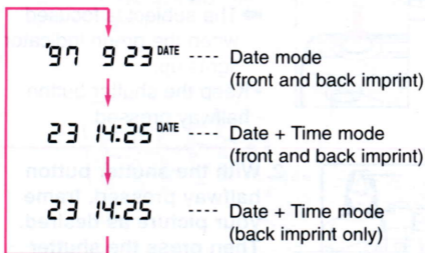
The date and time that a photo is taken can be imprinted on the back or the front and back of the print.



**Press the Date button.**

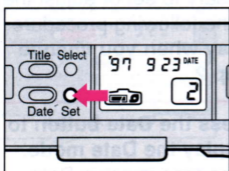
- The mode changes every time you press the button.

### Date Button Sequence



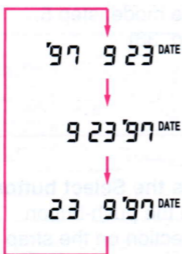
- The date and time format for Date + Time mode (e.g., 23 14:25) is set by the format selected for the date mode on page 31 (e.g., '97 9 23 14:25).
- **Character size, shape, color, position, and ability to print on both sides may vary according to the individual photo shop.**
- Date, time, and title are not photographically imprinted on the film, but are imprinted as part of the developing process, using data (IX information) magnetically recorded on the film.
- In addition to date/time imprinting, the back of the print provides space to imprint the ID of the film cartridge and the negative frame number.

## Switching the Date Format



In Date mode, press the **Set** button to select the date format.

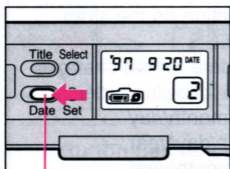
- Use the push-button projection on the strap clasp.
- The date format changes in the following order:  
year/month/day →  
month/day/year →  
day/month/year.





## Setting and Adjusting the Date/Time

After changing the battery, or when traveling internationally, it may be necessary to set or adjust the camera's date and time using the following procedure. If "-- -- --" blinks on the display when you change the battery, proceed from step 2.

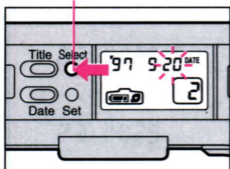


Date button

### 1. Press the Date button to display the Date mode.

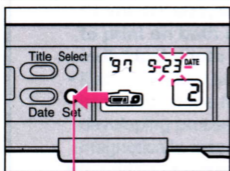
- The time is set in Date + Time mode, step 5. (→ p. 33)

Select button



### 2. Press the Select button.

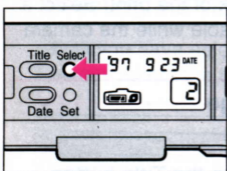
- Use the push-button projection on the strap clasp.
- When you replace the battery, the blinking "-- -- --" display changes to "97 1 1".
- The digits to be set start blinking.



Set button

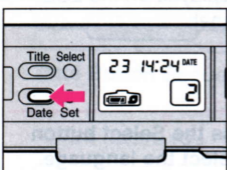
### 3. Press the Set button.

- Use the push-button projection on the strap clasp.
- Press repeatedly until the blinking digits show the desired value.

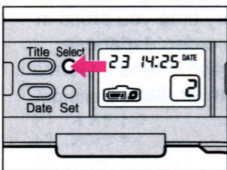


4. Repeat steps 2 and 3 until all digit settings and adjustments are completed, then press the **Select** button to end.

- The adjustment is completed when the digits stop blinking.



5. Press the **Date** button to display the **Date + Time** mode.



6. Repeat steps 2 and 3 until all digit settings and adjustments are completed, then press the **Select** button to end.

- The adjustment is completed when the digits stop blinking.



- If “-- -- --” blinks on the LCD panel (no Date imprinting) when the battery is replaced, reset the date and time.

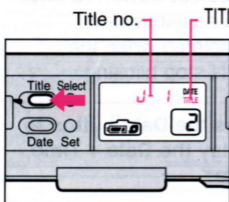


- Press the **Set** button to advance the digit by one, or hold for two seconds or more to advance the value continuously.
- The date cannot be set or adjusted in **Date + Time** mode.

## Imprinting Titles

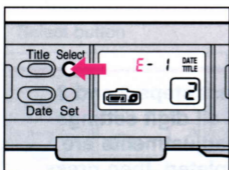
You can imprint titles on the back of the print. Select a title from the different titles available while the camera is turned on.

### Selecting the Title Language



#### 1. Press the Title button.

➔ The word TITLE is displayed on the LCD panel.



#### 2. Press the Select button to select the language.

- The language changes every time you press in this order: Japanese, English, French, German, Spanish, Italian.

### To Cancel Title Imprinting

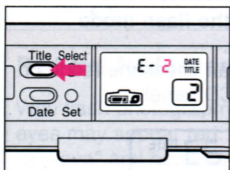
- Press the Date button until the word TITLE disappears from the LCD panel.



- **Character size, shape, color, position, and ability to print on both sides may vary according to the individual photo shop.**
- The title imprinting function is reset after one frame is exposed.  
To continuously imprint the same title, hold down the Title button for two seconds or longer (until the word TITLE blinks on the LCD panel).
- The date and time as set by the Date function is also printed with the title.

## Selecting the Title

Once you have selected the language for your title, you can select the title.



**Press the Title button.**

➔ The title number changes every time you press.

## Date Button Sequence

E-1 I LOVE YOU

E-2 THANK YOU

E-3 SEASON'S GREETING

E-5 HAPPY BIRTHDAY

E-4 CONGRATULATIONS

### Japanese Titles

- J-1 オメデトウ
- J-2 カンゲキ!
- J-3 カワイイデシヨ!
- J-4 ヨロシク!
- J-5 ウレシイナ

### French Titles

- F-1 JE T'AIME
- F-2 MERCI
- F-3 MEILLEURS VOEUX
- F-4 JOYEUX ANNIVERSAIRE
- F-5 FÉLICITATIONS

### Italian Titles

- I-1 TI AMO
- I-2 GRAZIE
- I-3 BUONE FESTE
- I-4 BUON COMPLEANNO
- I-5 CONGRATULAZIONI

### German Titles

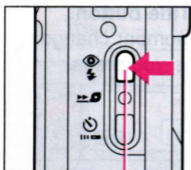
- D-1 ICH LIEBE DICH
- D-2 DANKESCHÖN
- D-3 HERZLICHE GLÜCKWÜNSCHE
- D-4 FRÖHLICHE WEIHNACHTEN
- D-5 FROHES NEUES JAHR

### Spanish Titles

- ES-1 TE QUIERO
- ES-2 GRACIAS
- ES-3 FELICES PASCUAS
- ES-4 FELIZ CUMPLEAÑOS
- ES-5 FELICIDADES

## Changing the Flash Mode

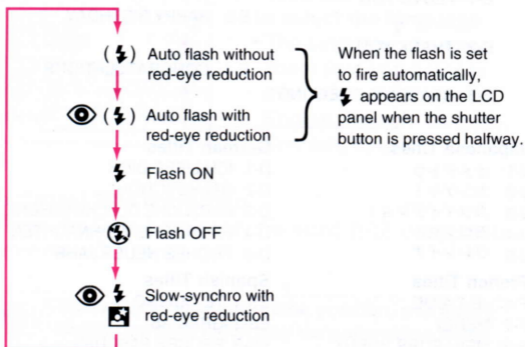
The flash can be made to fire every time you take a picture, or it can be turned off. Choose a mode suitable for the subject and place you are shooting. Select the flash mode while the camera is turned on. Select the flash mode while the camera is turned on.



Flash mode button

**Press the flash mode button.**

- You can check the mode on the LCD panel.




- To change to 👁️⚡ after the power is turned on, turn the power off when 👁️⚡ is displayed. When the power is turned on again, 👁️⚡ will be displayed. To revert to the original state, turn the power off when Auto flash without red-eye reduction is selected.

## Flash Distance Range (With color print film)

Film Speed	Flash Range
ISO 100	0.45 to 3.8 m (1.5 to 12.5 ft.)
ISO 200	0.45 to 5.4 m (1.5 to 17.7 ft.)
ISO 400	0.45 to 7.6 m (1.5 to 24.9 ft.)

### Red-eye Reduction Function

With flash photography in dark places, the subject's eyes may appear red. This phenomenon is called "red-eye" and occurs when flash illumination reflects off the retina.

With the red-eye reduction function , the red-eye reduction lamp lights up to illuminate the subject for about one second before the flash is fired. This will minimize the chances of red-eye.



- When the red-eye reduction lamp lights up, the shutter will not release for about one second. This is to increase the effectiveness of the red-eye reduction function. If you want to shoot right away, turn the red-eye reduction function off with the flash mode button.



#### Important guidelines for using the red-eye reduction function

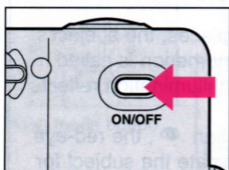
1. This function is not effective unless the subject looks directly at the red-eye reduction lamp while it is lit. Be sure to tell your subject to look straight at the lamp.
2. Stay within 2 m (6.6 ft.) of your subject.
3. The efficacy of the red-eye reduction function varies from person to person.
4. Try to raise the ambient light level as much as possible.

## Changing the Flash Mode

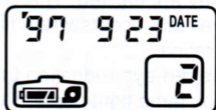
### 1 Auto Flash Mode without Red-eye Reduction


Set this mode for taking pictures without people, or if you want to shoot right away without the red-eye reduction function. (→ p. 37)

In low light or backlit conditions, the flash fires automatically when the shutter button is pressed.



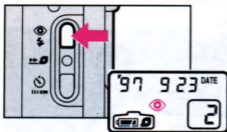
Press the main switch to turn the power on.



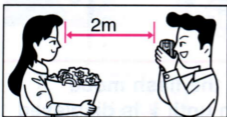
- If  is displayed on the LCD panel, press the flash mode button until it disappears.

## 2 Auto Flash Mode with Red-eye Reduction .....

Set this mode when shooting pictures of people in low-light conditions. When the shutter button is pressed, the red-eye reduction lamp lights up and the flash fires. (→ p. 37)



1. Press the flash mode button and display .



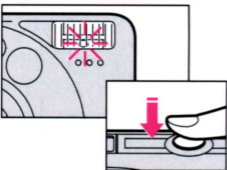
2. Stay within about 2 m/6.6 ft of your subject.

- The red-eye reduction lamp is only effective within this distance.



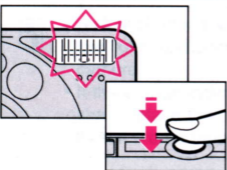
3. Tell your subject to look at the camera.

- The red-eye reduction function is not effective unless the subject looks straight at the lamp.



4. Press the shutter button halfway.

- ➔ The red-eye reduction lamp lights up and the shutter will not release for about one second.
- Keep the shutter button halfway pressed.



5. After about one second, press the shutter button fully.

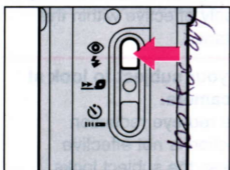
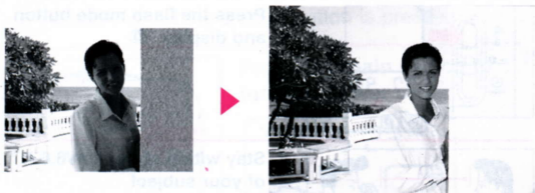
- ➔ The flash fires and the shutter is released.



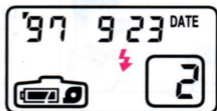
## Changing the Flash Mode

### 3 Flash ON Mode ..... ⚡

The flash fires regardless of the light conditions. Set this mode for fill-in flash during the day, or to soften the outline of the subject.



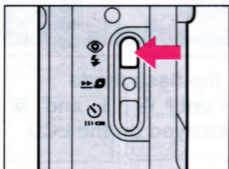
Press the flash mode button until ⚡ is displayed on the LCD panel.




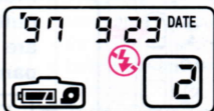
#### 4 Flash OFF Mode .....



The flash will not fire even in low light conditions. Use this mode where flash is prohibited, for night views, or for available-light photography.



Press the flash mode button until  is displayed on the LCD panel.

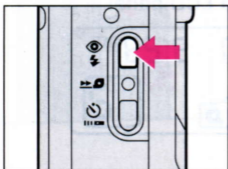





- A slow shutter speed (max. approx. 2 sec.) is set in low light conditions; be careful not to move the camera.
- If the orange indicator blinks to indicate camera shake, place the camera on a steady surface or mount it on a tripod.

## Changing the Flash Mode

### 5 Slow-synchro Mode with Red-eye Reduction ...

This mode is effective when taking pictures of people with an evening or nocturnal background. Flash and slow shutter speed are effectively combined, so that the flash illuminates the subject, and the slow shutter speed illuminates the distant background.



Press the flash mode button until ,  and  are displayed on the LCD panel.



- A slower shutter speed (max. approx. 2 sec.) is set in this mode; be sure to use a tripod to avoid camera shake. Also, tell your subject to keep still for a moment after the flash has fired.



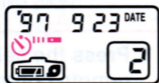
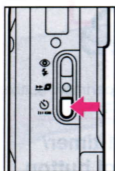
- The red-eye reduction function operates in this mode.
- In certain shooting situations, "Auto flash" mode may be more effective for shooting. We therefore recommend you take pictures in both "Slow-synchro" and "Auto flash" modes.

## Self-timer Shooting



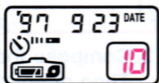
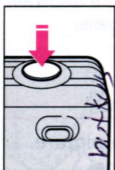
Include yourself in the picture by delaying shutter release with the self-timer. Place the camera on a steady surface, or mount it on a tripod.

Select the self-timer and remote control modes while the camera is turned on.



### 1. Press the self-timer/remote control button.

➔ ☺ and are displayed on the LCD panel.



### 2. Compose the picture, then press the shutter button.

➔ The red-eye reduction lamp blinks (once/sec.) for about 10 seconds before the shutter is released.

➔ The LCD panel counts down the remaining seconds.

### To cancel the self-timer

- Press the self-timer/remote control button.



- Do not stand in front of the camera when pressing the shutter button; this will cause incorrect focus.

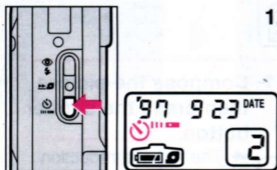
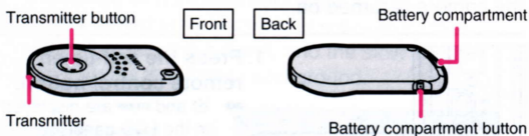


- Self-timer shooting is possible for approx. four minutes while ☺ is displayed in the LCD panel.
- The lamp blinks more rapidly approximately two seconds before the shutter is released. However, if the red-eye reduction function has been activated, the lamp will remain lit during the last two seconds before the shutter is released.

## Shooting with the Optional Remote Control

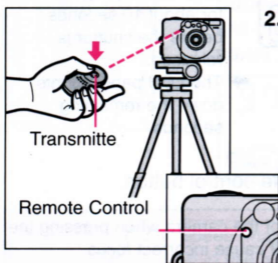
Use the remote control to release the shutter when you are away from the camera.

### Remote Control (RC-5)



#### 1. Press the self-timer/ remote control button.

➔ ☺ and are displayed on the LCD panel.



#### 2. Compose the picture. Then direct the transmitter towards the camera's remote control signal receptor and press the transmitter button.

➔ When the transmitter button is pressed, the red-eye reduction lamp lights up and the shutter is released approx. two seconds later.

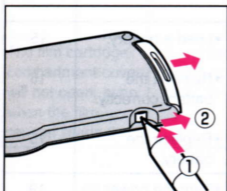
### To Cancel remote control shooting

- Press the self-timer/remote control button to remove ☺ and from the LCD panel.

## Replacing the Remote Control Battery

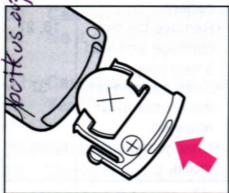
Replace the battery when the shutter no longer releases with the remote control.

Battery: One lithium battery (CR2032, 3V)



### 1. While pressing the battery compartment button, pull out the battery compartment.

- While using a ball pen, or similar pointed object, to press the battery compartment button, slide out the battery compartment.



### 2. Load a new battery and replace the battery compartment.

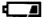

- Remove the expired battery and insert the new one with the + and - terminals positioned correctly.



- The operating distance when directly facing the camera is approximately 5 m (16.4 ft.)
- Remote control shooting is possible for approx. four minutes while is displayed on the LCD panel.
- Place the camera on a steady surface or use a tripod.
- Remote control shooting may not be possible if the remote control signal receptor is exposed to strong sunlight or fluorescent light. In this case, use the self-timer to take the picture, or move the camera to a different location.
- The remote control may not operate properly when an inverter-type fluorescent light is nearby. Move the camera away from the inverter-type fluorescent light.

# Troubleshooting

In case of trouble check the table below before taking you camera to be repaired.

Problem	Cause	Remedy	Page
The battery check indicator  blinks.	<ul style="list-style-type: none"> <li>•The battery has expired.</li> </ul>	<ul style="list-style-type: none"> <li>•Replace the battery.</li> </ul>	15
The battery check indicator  is not displayed.	<ul style="list-style-type: none"> <li>•No battery is loaded.</li> </ul>	<ul style="list-style-type: none"> <li>•Load a battery.</li> </ul>	15
	<ul style="list-style-type: none"> <li>•The battery is inserted with the wrong polarities.</li> </ul>	<ul style="list-style-type: none"> <li>•Reinsert the battery correctly.</li> </ul>	15
	<ul style="list-style-type: none"> <li>•The battery has completely expired.</li> </ul>	<ul style="list-style-type: none"> <li>•Replace the battery.</li> </ul>	15
The shutter does not release.	<ul style="list-style-type: none"> <li>•The power is turned off.</li> </ul>	<ul style="list-style-type: none"> <li>•Turn the power on.</li> </ul>	19
	<ul style="list-style-type: none"> <li>•The battery has expired.</li> </ul>	<ul style="list-style-type: none"> <li>•Replace the battery.</li> </ul>	15
	<ul style="list-style-type: none"> <li>•A rewind film cartridge is loaded in the camera.</li> </ul>	<ul style="list-style-type: none"> <li>•Remove the film cartridge and load a new one.</li> </ul>	16, 27
	<ul style="list-style-type: none"> <li>•The shutter will be released only after the red-eye reduction lamp is lit for about 1 second.</li> </ul>	<ul style="list-style-type: none"> <li>•Keep pressed until the shutter is released.</li> </ul>	37
		<ul style="list-style-type: none"> <li>•Change the flash mode.</li> </ul>	36
The photographs are blurred.	<ul style="list-style-type: none"> <li>•When the shutter was released, the AF light emitter/ receptor were blocked.</li> </ul>	<ul style="list-style-type: none"> <li>•Ensure that the AF light emitter/ receptor are not blocked by hair, fingers, etc.</li> </ul>	21
	<ul style="list-style-type: none"> <li>•In self-timer shooting, you stood immediately in front of the camera when pressing the shutter button.</li> </ul>	<ul style="list-style-type: none"> <li>•Make sure you do not stand immediately in front of the camera when pressing the shutter button.</li> </ul>	43
	<ul style="list-style-type: none"> <li>•The camera moved when the shutter button was pressed (camera shake).</li> </ul>	<ul style="list-style-type: none"> <li>•Press the shutter button gently.</li> </ul>	25

Problem	Cause	Remedy	Page
"H" is displayed on the LCD panel.	•The self-diagnosis function detected an error.	•Remove the battery from the camera. When "H" disappears from the LCD display, load the battery again.	15
The film cartridge compartment cover will not open, even when the film counter reads 0.	•A problem occurred after rewinding.	•Press the film rewind button.	27

## Questions and Answers

**Q1 Can previous 135 (35mm) film be used?**

A1 No it cannot be used. Use IX240 film cartridges.

**Q2 Can slide film be used with this camera?**

A2 Yes it can.

**Q3 What is ISO?**

A3 The ISO number indicates the film's sensitivity to light in numerical terms. The higher the number, the more sensitive the film is to light.

**Q4 The picture was taken with date imprinting, but it doesn't appear on the index print. Why is this?**

A4 The date and time are recorded on the film surface magnetically. This data is read electronically and printed during the printing process. This is why the date and time data may not appear on the index print sheets.

**Q5 When converted to a 35mm camera, what is this camera's 26mm focusing distance equivalent to?**

A5 Approximately 32.5mm (for H-type prints).



## Specifications

**Type:** IX240 lens/shutter type, AF, fully automatic camera with magnetic IX functions

**Image Size:** 16.7 × 30.2 mm

**Lens:** Canon 26mm f/2.8

**Focus Control:** Active auto-focus system

**Shooting Distance:** 0.45 m/1.5 ft. to infinity

**Shutter:** Combination aperture and program electromagnetic drive shutter

**Viewfinder:** Real-image viewfinder

**Viewfinder Displays:** Picture frame, AF frame, close-up frame

**Viewfinder Eyepiece Area:** Green indicator (ready for shooting), Orange indicator (camera shake warning/Flash charged)

**Film Loading:** Automatic (automatic blank film advance)

**Film Winding:** Automatic

**Film Rewinding:** Automatic at end of film, mid-roll rewinding possible

**Frame Counter:** Counts up during winding, counts down during rewinding

**Self-timer:** Electronically-controlled 10-second delay timer, activated by pressing the shutter button. The self-timer/red-eye reduction lamp blinks during operation and the frame counter counts down the remaining seconds.

**Optional remote control function:** Remote control system using infrared light; activated with the transmitter button, 2-second delay release

Operating distance range: Within approx. 5 m (16.5 ft.)

Battery life: approx. 6000 times

**Metering Range (ISO 100):**

AUTO/Flash ON modes:

1/60 f/2.8 to 1/800 f/18 (approx. EV9 to EV18)

Flash OFF/Slow-synchro modes:

2 sec. f/2.8 to 1/800 f/18 (approx. EV2 to EV18)

**Exposure Compensation:** +1.5 step automatic exposure compensation in backlit conditions if necessary

**Film Speed Setting:** ISO 25 to 10000; Automatically set in 1/3-step increments

**Built-in Flash:** Internal flash with automatic operation in low light and backlit conditions

**Flash Range:** 0.45 to 3.8 m/1.5 to 12.5 ft. (with ISO 100 color print film)

**Flash Recycling Time:** Approx. 5 seconds

**Flash Conditions:** With flash mode button

- ① Full-auto mode: Automatically fires in low light and backlit conditions
- ② Auto mode with red-eye reduction: Automatically fires in low light and backlit conditions
- ③ Flash ON mode: Fires every time
- ④ Flash OFF mode: Does not fire
- ⑤ Slow-synchro mode: Fires every time

**Date/Title Function:**

Type: Built-in LCD panel and automatic calendar with quartz digital date/time clock, programmed with dates until the year 2029 (compensates automatically for long and short months and leap years)

Data types: Date/Date + Time, Titles (6 languages, 5 formats)

Character type: Depends on the lab's capabilities

Data color: Depends on the lab's capabilities

**Power Supply:** One lithium battery (CR2, 3V)

**Shooting Capacity:** Approx. 18 film cartridges of 25-exp.

**Dimensions (W × H × D):**

89.5 × 59.8 × 23.5 mm/3.5 × 2.4 × 0.9 in

\*Cartridge compartment depth: 28 mm/1.1 in.

**Weight:** 125 g/4.4 oz. (without battery)

- All data are based on Canon's Standard Test Method.
- Subject to change without notice